

HPD-05 Portable Hydraulic Pump

Double-Acting Hydraulic Pump



Specifications

Model	HPD-05	
Power Source (Single Phase)	115 V/230 V AC	
Allowable Max. Pressures	10,000psi (700 kgf/cm ²)	
Output qt/min	50 Hz	60 Hz
At No Load	1.28	1.53
At 10,000 psi	0.59	0.70
Motor	0.4kW 4P	
Reservoir Capacity qt	4.26	
Discharge Port	Rc 3/8	
Electro-Magnetic Valve	4 way 3 position valve	
Mass (Weight) lbs (kg)	72 (32.5)	

HS06-1322



Allowable Max. Pressure

82,560 lbs (41ton)

Max. Punching Thickness: 1/2"

(A36)

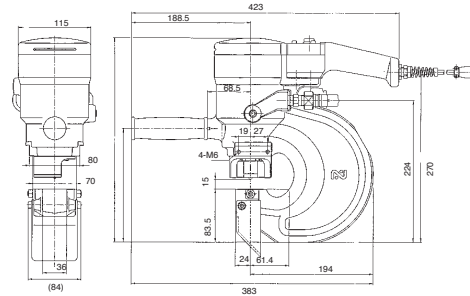
Max. Punching Diameter: 7/8"

MODEL

HS06-1322

Specifications

Model	HS06-1322	
Max. Throat Depth	inch (mm)	2-3/8" (60)
Punching capacity	inch (mm)	Max. Punching Diameter Max. Punching Thickness
Mild Steel A36		7/8" (22) 1/2" (13)
Stainless Steel 304		7/8" (22) 1/4" (6)
Hole Making Time	Punching Time 7.9 sec. Returning Time 3.4 sec.	
Allowable Max. Pressure	10.000 psi (700 kgf/cm ²)	
Max. Output	lbs (ton)	82,650 (41)
Ram Stroke	inch (mm)	13/16" (21)
Mass (Weight)	lbs (kg)	45 (20.5)



Standard Accessories for HS06-1322

- Hose kit assembly
- Hose cord assembly
- Sub handle assembly
- Tool box
- 4 mm Allen wrench
- #12 Spanner wrench
- 22 mm "D" series punch & die
- Chip guard assembly
- Spanner

HS07-1624

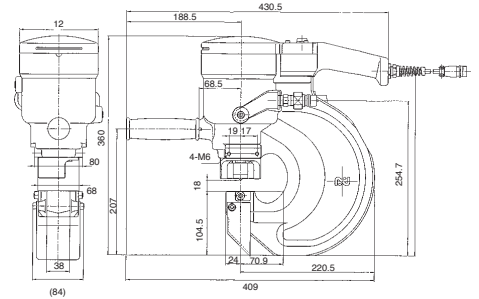
Allowable Max. Pressure

104,380 lbs (52ton)

Max. Punching Thickness: 5/8"
(A36)
Max. Punching Diameter: 15/16"

MODEL

HS07-1624



Specifications

Model	HS07-1624	
Max. Throat Depth	inch (mm)	2-3/4" (70)
Punching capacity	inch (mm)	Max. Punching Diameter Max. Punching Thickness
Mild Steel A36		15/16" (24) 5/8" (16)
Stainless Steel 304		15/16" (24) 1/4" (6)
Hole Making Time	Punching Time 11.8 sec. Returning Time 5.7 sec.	
Allowable Max. Pressure	10,000 psi (700 kgf/cm ²)	
Max. Output	lbs (ton)	104,380 (52)
Ram Stroke	inch (mm)	1" (25)
Mass (Weight)	lbs (kg)	56 (25.5)

*Can be modified to accept 1-1/16" punch & die. Consult factory.

Standard Accessories for HS07-1624

- Hose kit assembly
- Hose cord assembly
- Sub handle assembly
- Tool box
- 4 mm Allen wrench
- #12 Spanner wrench
- 22 mm "D" series punch & die
- Chip guard assembly
- Spanner

HS11-1624

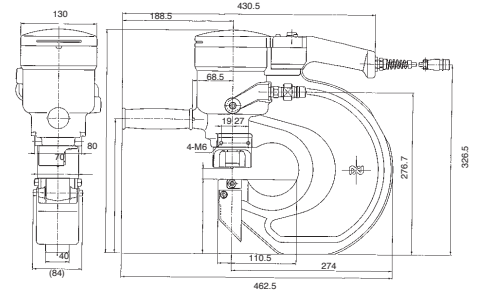
Allowable Max. Pressure

104,380 lbs (52ton)

Max. Punching Thickness: 5/8"
(A36)
Max. Punching Diameter: 15/16"

MODEL

HS11-1624



Specifications

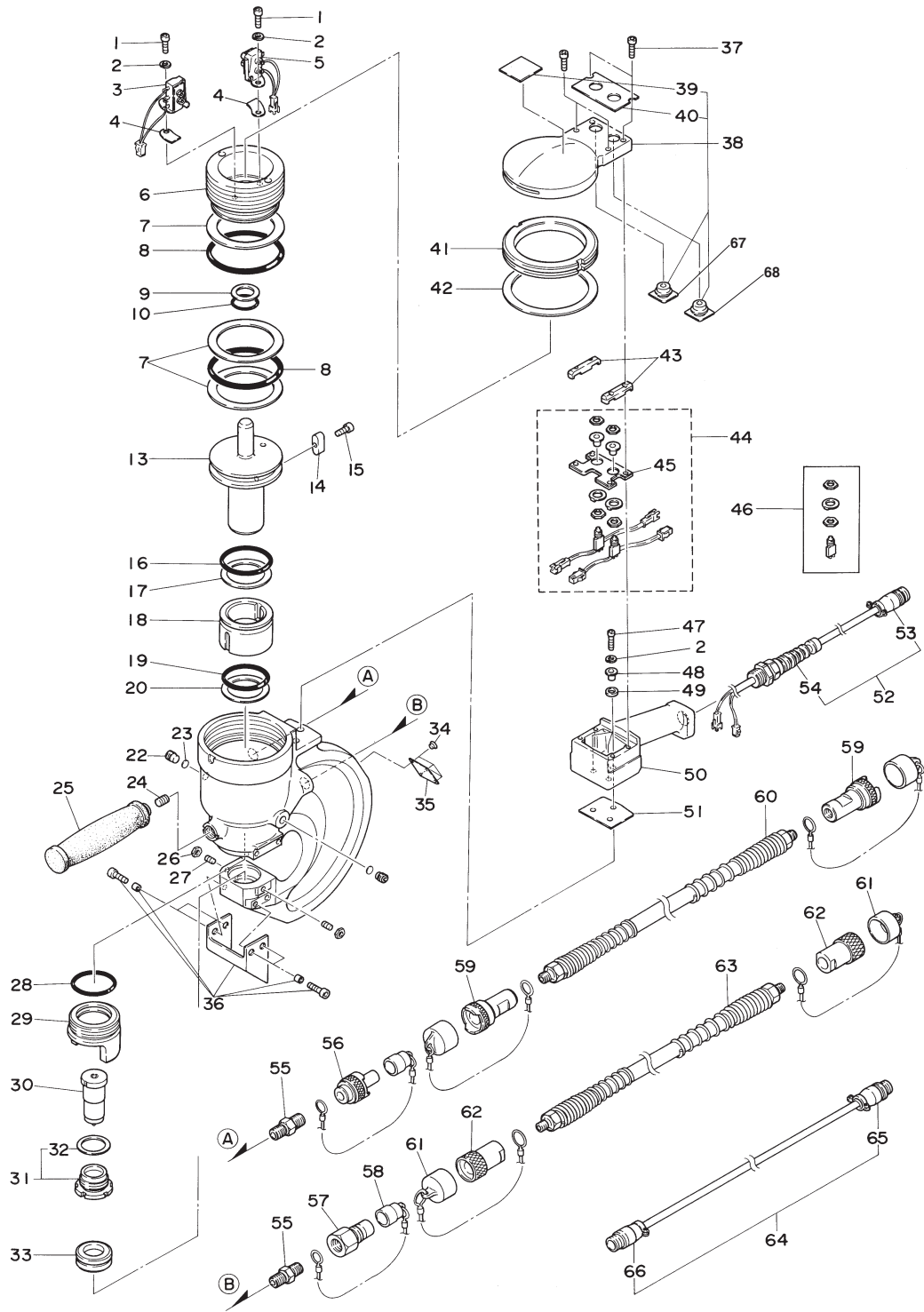
Model		HS11-1624		
Max. Throat Depth	inch (mm)	4-5/16" (110)		
Punching capacity	inch (mm)	Max. Punching Diameter	Max. Punching Thickness	
		Mild Steel A36	15/16" (24)	5/8" (16)
		Stainless Steel 304	15/16" (24)	1/4" (6)
Hole Making Time		Punching Time 11.8 sec. Returning Time 5.7 sec.		
Allowable Max. Pressure		10,000 psi (700 kgf/cm ²)		
Max. Output	lbs (ton)	104,380 (52)		
Ram Stroke	inch (mm)	1" (25)		
Mass (Weight)	lbs (kg)	66 (30)		

*Can be modified to accept 1-1/16" punch & die. Consult factory.

Standard Accessories for HS11-1624

- Hose kit assembly
- Hose cord assembly
- Sub handle assembly
- Tool box
- #12 Spanner wrench
- 22 mm "D" series punch & die
- Chip guard assembly
- Spanner

SELFER ACE HS07-1624/HS11-1624 ASSEMBLY



SELFER ACE HS07-1624/HS11-1624 PARTS LIST

The parts numbers with () are included in the Ass'y parts written above them.

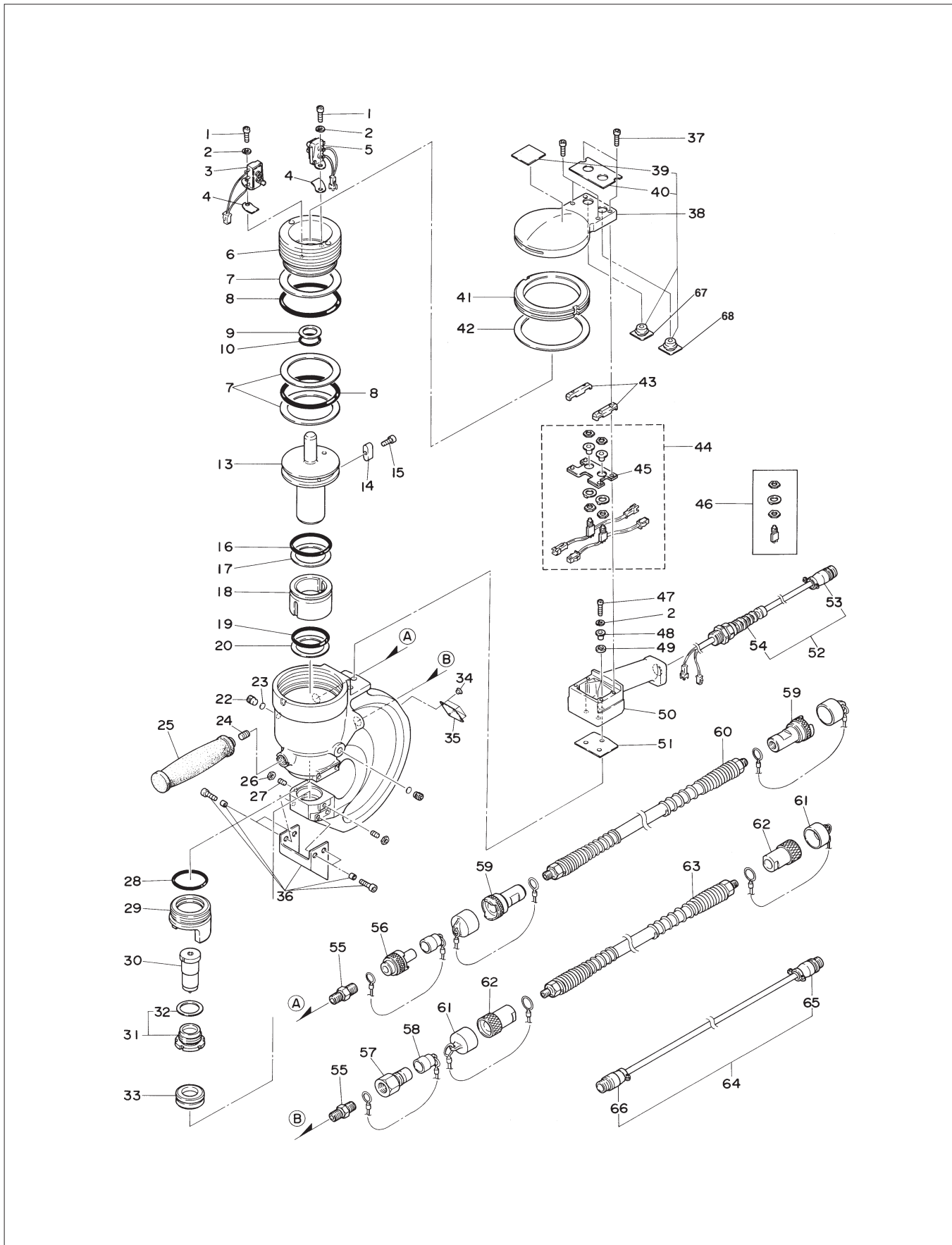
No.	Part No.	Part Name	Q'ty	Price
1	TP01644	Hex. Socket Head Bolt 6 X 12	2	
2	TP00629	Spring Washer M6	5	
3	TB02278	Limit Switch Lower Ass'y	1 set	
4	(TQ02047)	Shim 1.0 (for Adjustment)		
4	(TQ02048)	Shim 0.5		
5	TB02277	Limit Switch Upper End Ass'y	1 set	
6	TQ02014	Cap	1	
7	TQ02015	Back-up Ring P-85 T3	3	
8	TQ02011	O-Ring P-85 PUR	2	
9	CP23977	Back-up Ring P-20 T2	1	
10	TQ02016	O-Ring P-20	1	
13	TQ02005	Ram	1	
14	TQ02006	Parallel Key 10 X 8 X 22	1	
15	TP06342	Hex. Bolt 4 X 10	1	
16	TQ02002	O-Ring P-60 PUR	1	
17	TQ02003	Back-up Ring P-60 T2	1	
18	TQ01999	Bushing	1	
19	TQ02000	O-Ring P-45 PUR	1	
20	TQ02001	Back-up Ring P-45 T2	1	
22	TQ02054	Set Screw	2	
23	TQ02055	Copper Packing 10 X 5	2	
24	TQ02004	Hex. Socket Set Screw 8 X 16	1	
26	TQ01050	Small Hex. Nut Type 3 M8	2	
27	TQ02304	Hex. Socket Set Screw with Cone Point 8 X 20	2	
28	CP28124	O-Ring P-45	1	
29	TQ02043	Stripper	1	
30	TJ06676	Punch 22	1	
31	TA99036	Lock Nut Ass'y	1 set	
32	(TP07009)	Urethane Washer 31 X 40 X 3.1	1	
33	TJ06677	Die 22	1	
34	TP05136	Drive Rivet No. 2 X 4.8	4	
35	TQ03224	Plate Model Number (HS07)	1	
35	TQ03226	Plate Model Number (HS11)	1	
37	TP04154	Hex. Socket Head Cap Screw 4 X 16	4	
38	TB02463	Head Cover Ass'y	1 set	
39	(TQ03223)	Label – Warning	1	
40	(TQ03222)	Label – Switch	1	
41	TQ02027	Lock Ring	1	
42	TQ02197	Folding Washer	1	
43	TQ02051	Spacer	2	
44	TB02387	Switch Plate Ass'y	1 set	
45	(TB01924)	Switch Plate Sub Ass'y	1 set	

No.	Part No.	Part Name	Q'ty	Price
46	(TQ06476)	Push Button Switch MB2011	2	
47	TP10953	Hex. Socket Head Cap Screw 6 X 18	3	
48	TQ02044	Distance Collar M6	3	
49	TQ02045	Washer 10 X 18 X 2	3	
50	TQ02038	Grip	1	
51	TQ02046	Grip Sheet	1	
52	TB02389	Metal Cord	1 set	
53	(TQ02036)	Metal Cord Plug	1	
54	(TQ02219)	Cord Stopper BS-9	1	
55	TQ02142	Nipple R3/8 X R3/8	2	
56	CA94119	700R-3P Cupla w/Cap	1 set	
57	CA82240	450B-3P Ass'y	1 set	
58	CB09421	450B-3P-D Ass'y	1 set	

ACCESSORIES

25	TA92089	Sub Handle Ass'y	1 set	
36	TB02230	Chip Guard Ass'y	1 set	
59	CA94118	700R-3S Cupla w/Cap	2 sets	
60	TP05184	Ultra-high Pressure Hose	1	
61	CA96464	Dust Cap	2 sets	
62	CB00126	450B-3S Ass'y	2 sets	
63	TQ02569	High Pressure Hose	1	
64	TB02390	Switch Cord Ass'y	1 set	
65	(TQ02568)	Metal Straight Plug	1	
66	(TQ02567)	Metal Straight Socket	1	
67	TP10878	Red Cap (Stop Button Cover)	1	
68	TP10877	Black Cap (Start Button Cover)	1	
	TB02142	Hook Clamp Ass'y	1	
	TP01939	Hex. Wrench Key 4	1	
	TP04004	Hex. Wrench Key 5	1	
	TP06012	Spanner	1	
	TP17991	Spanner 12	1	
	TP10198	Tool Box 285 X 125 X 62	1	
	TQ03228	Instruction Manual	1	

SELFER ACE HS07-1624/HS11-1624 ASSEMBLY



SELFER ACE HS07-1624/HS11-1624 PARTS LIST

The parts numbers with () are included in the Ass'y parts written above them.

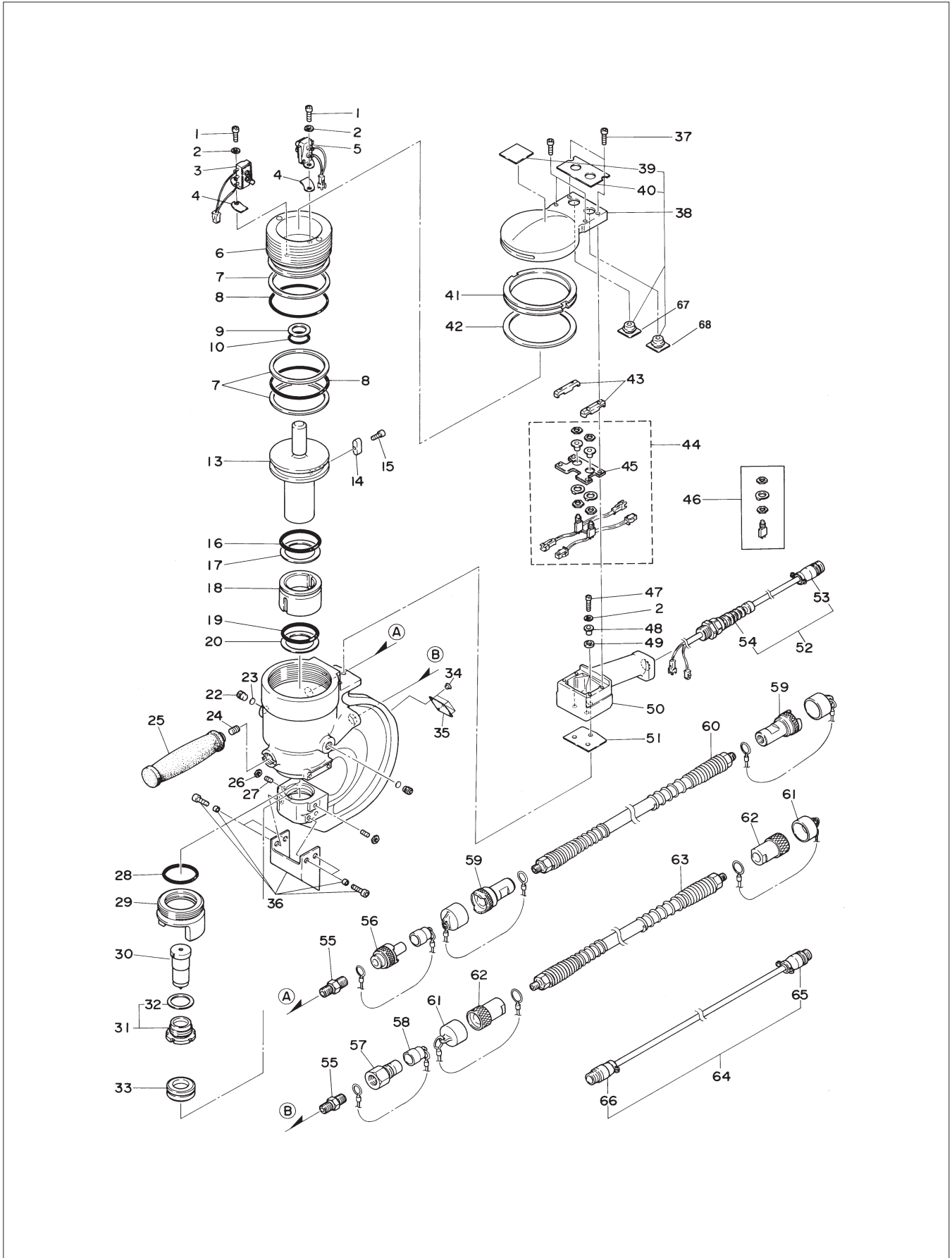
No.	Part No.	Part Name	Q'ty	Price
1	TP01644	Hex. Socket Head Bolt 6 X 12	2	
2	TP00629	Spring Washer M6	5	
3	TB02278	Limit Switch Lower Ass'y	1 set	
4	(TQ02047)	Shim 1.0 (for Adjustment)		
4	(TQ02048)	Shim 0.5		
5	TB02277	Limit Switch Upper End Ass'y	1 set	
6	TQ02014	Cap	1	
7	TQ02015	Back-up Ring P-85 T3	3	
8	TQ02011	O-Ring P-85 PUR	2	
9	CP23977	Back-up Ring P-20 T2	1	
10	TQ02016	O-Ring P-20	1	
13	TQ02005	Ram	1	
14	TQ02006	Parallel Key 10 X 8 X 22	1	
15	TP06342	Hex. Bolt 4 X 10	1	
16	TQ02002	O-Ring P-60 PUR	1	
17	TQ02003	Back-up Ring P-60 T2	1	
18	TQ01999	Bushing	1	
19	TQ02000	O-Ring P-45 PUR	1	
20	TQ02001	Back-up Ring P-45 T2	1	
22	TQ02054	Set Screw	2	
23	TQ02055	Copper Packing 10 X 5	2	
24	TQ02004	Hex. Socket Set Screw 8 X 16	1	
26	TQ01050	Small Hex. Nut Type 3 M8	2	
27	TQ02304	Hex. Socket Set Screw with Cone Point 8 X 20	2	
28	CP28124	O-Ring P-45	1	
29	TQ02043	Stripper	1	
30	TJ06676	Punch 22	1	
31	TA99036	Lock Nut Ass'y	1 set	
32	(TP07009)	Urethane Washer 31 X 40 X 3.1	1	
33	TJ06677	Die 22	1	
34	TP05136	Drive Rivet No. 2 X 4.8	4	
35	TQ03224	Plate Model Number (HS07)	1	
35	TQ03226	Plate Model Number (HS11)	1	
37	TP04154	Hex. Socket Head Cap Screw 4 X 16	4	
38	TB02463	Head Cover Ass'y	1 set	
39	(TQ03223)	Label – Warning	1	
40	(TQ03222)	Label – Switch	1	
41	TQ02027	Lock Ring	1	
42	TQ02197	Folding Washer	1	
43	TQ02051	Spacer	2	
44	TB02387	Switch Plate Ass'y	1 set	
45	(TB01924)	Switch Plate Sub Ass'y	1 set	

No.	Part No.	Part Name	Q'ty	Price
46	(TQ06476)	Push Button Switch MB2011	2	
47	TP10953	Hex. Socket Head Cap Screw 6 X 18	3	
48	TQ02044	Distance Collar M6	3	
49	TQ02045	Washer 10 X 18 X 2	3	
50	TQ02038	Grip	1	
51	TQ02046	Grip Sheet	1	
52	TB02389	Metal Cord	1 set	
53	(TQ02036)	Metal Cord Plug	1	
54	(TQ02219)	Cord Stopper BS-9	1	
55	TQ02142	Nipple R3/8 X R3/8	2	
56	CA94119	700R-3P Cupla w/Cap	1 set	
57	CA82240	450B-3P Ass'y	1 set	
58	CB09421	450B-3P-D Ass'y	1 set	

ACCESSORIES

25	TA92089	Sub Handle Ass'y	1 set	
36	TB02230	Chip Guard Ass'y	1 set	
59	CA94118	700R-3S Cupla w/Cap	2 sets	
60	TP05184	Ultra-high Pressure Hose	1	
61	CA96464	Dust Cap	2 sets	
62	CB00126	450B-3S Ass'y	2 sets	
63	TQ02569	High Pressure Hose	1	
64	TB02390	Switch Cord Ass'y	1 set	
65	(TQ02568)	Metal Straight Plug	1	
66	(TQ02567)	Metal Straight Socket	1	
67	TP10878	Red Cap (Stop Button Cover)	1	
68	TP10877	Black Cap (Start Button Cover)	1	
	TB02142	Hook Clamp Ass'y	1	
	TP01939	Hex. Wrench Key 4	1	
	TP04004	Hex. Wrench Key 5	1	
	TP06012	Spanner	1	
	TP17991	Spanner 12	1	
	TP10198	Tool Box 285 X 125 X 62	1	
	TQ03228	Instruction Manual	1	

SELFER ACE HS06-1322 ASSEMBLY



SELFER ACE HS06-1322 PARTS LIST

The parts numbers with () are included in the Ass'y parts written above them.

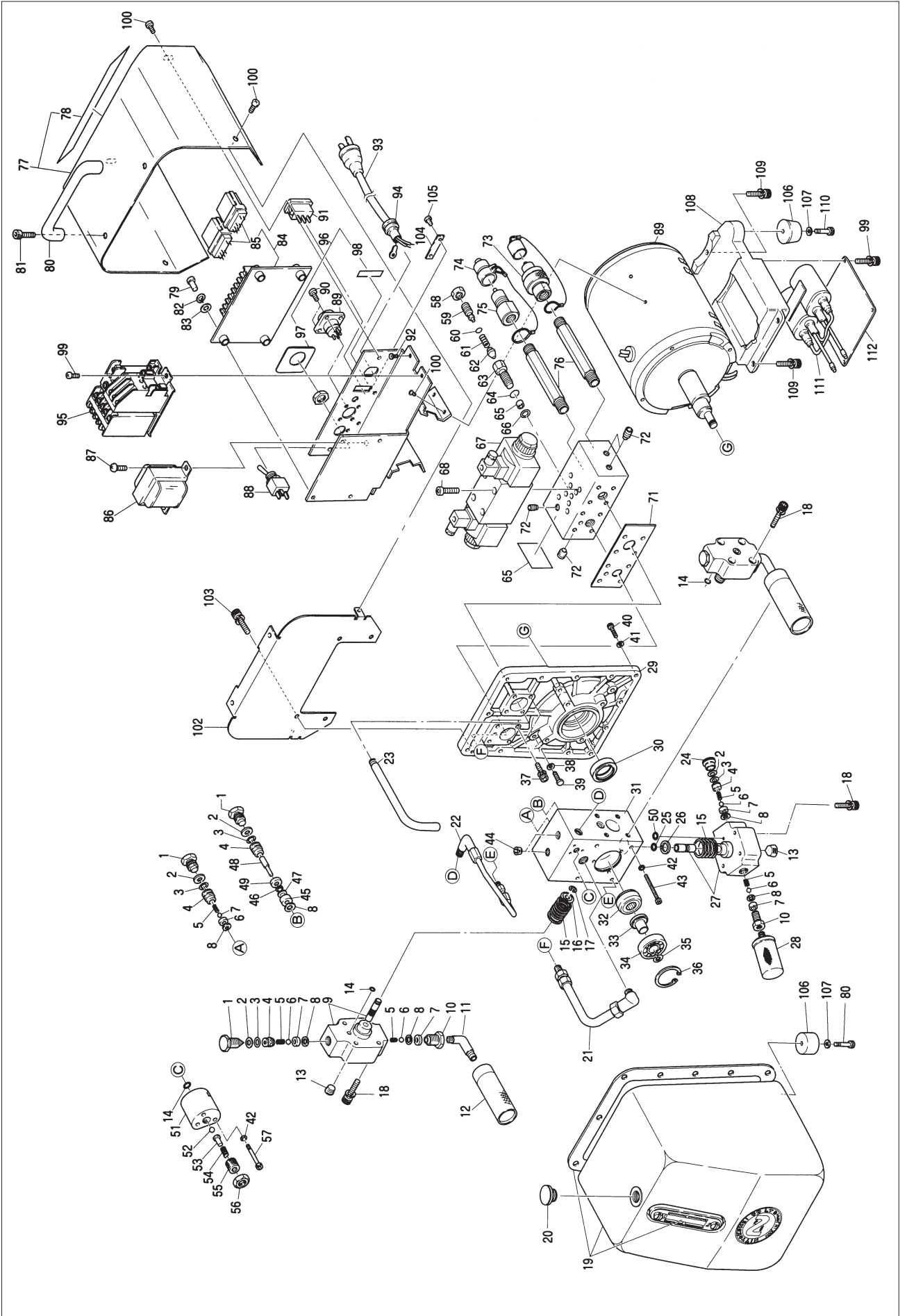
No.	Part No.	Part Name	Q'ty	Price
1	TP01644	Hex. Socket Head Bolt 6 X 12	2	
2	TP00629	Spring Washer M6	5	
3	TB02286	Limit Switch Lower End Ass'y	1 set	
4	(TQ02047)	Shim 1.0 (for Adjustment)		
	(TQ02048)	Shim 0.5		
5	TB02277	Limit Switch Upper End Ass'y	1 set	
6	TQ02067	Cap	1	
7	TQ02068	Back-up Ring P-75 T3	3	
8	TQ02065	O-Ring P-75 PUR	2	
9	CP23977	Back-up Ring P-20 T2	1	
10	TQ02016	O-Ring P-20	1	
13	TQ02064	Ram	1	
14	TQ02006	Parallel Key 10 X 8 X 22	1	
15	TP06342	Hex. Bolt 4 X 10	1	
16	TQ02002	O-Ring P-60 PUR	1	
17	TQ02003	Back-up Ring P-60 T2	1	
18	TQ01999	Bushing	1	
19	TQ02000	O-Ring P-45 PUR	1	
20	TQ02001	Back-up Ring P-45 T2	1	
22	TQ02054	Set Screw	2	
23	TQ02055	Copper Packing 10 X 5	2	
24	TQ02004	Hex. Socket Set Screw 8 X 16	1	
26	TQ01050	Small Hex. Nut Type 3 M8	2	
27	TQ02304	Hex. Socket Set Screw with Cone Point 8 X 20	2	
28	CP28124	O-Ring P-45	1	
29	TQ02073	Stripper	1	
30	TJ06676	Punch 22	1	
31	TA99036	Lock Nut Ass'y	1 set	
32	(TP07009)	Urethane Washer 31 X 40 X 3.1	1	
33	TJ06677	Die 22	1	
34	TP05136	Drive Rivet No.2 X 4.8	4	
35	TQ03225	Plate Model Number	1	
37	TP04154	Hex. Socket Head Cap Screw 4 X 16	4	
38	TB02468	Head Cover Ass'y	1 set	
39	(TQ03223)	Label Warning	1	
40	(TQ03222)	Label Switch	1	
41	TQ02070	Lock Ring	1	
42	TQ02205	Folding Washer	1	
43	TQ02051	Spacer	2	
44	TB02387	Switch Plate Ass'y	1 set	

No.	Part No.	Part Name	Q'ty	Price
45	(TB01924)	Switch Plate Sub Ass'y	1 set	
46	(TQ06476)	Push Button Switch MB2011	2	
47	TP10953	Hex. Socket Head Cap Screw 6 X 18	3	
48	TQ02044	Distance Collar M6	3	
49	TQ02045	Washer 10 X 18 X 2	3	
50	TQ02038	Grip	1	
51	TQ02046	Grip Sheet	1	
52	TB02389	Metal Cord Ass'y	1 set	
53	(TQ02036)	Metal Cord Relay Plug	1	
54	(TQ02219)	Cord Stopper BS-9	1	
55	TQ02142	Nipple R3/8 X R3/8	2	
56	CA94119	700R-3P Cupla w/Cap	1 set	
57	CA82240	450B-3P Ass'y	1 set	
58	CB09421	450B-3P-D Ass'y	1 set	

ACCESSORIES

25	TA92089	Sub Handle Ass'y	1 set	
36	TB02230	Chip Guard Ass'y	1 set	
59	CA94118	700R-3S Cupla w/Cap	2 sets	
60	TP05184	Ultra-high Pressure Hose	1	
61	CA96464	Dust Cap	2 sets	
62	CB00126	450B-3S Ass'y	2 sets	
63	TQ02569	High Pressure Hose	1	
64	TB02390	Switch Cord Ass'y	1 set	
65	(TQ02568)	Metal Straight Plug	1	
66	(TQ02567)	Metal Straight Socket	1	
67	TP10878	Red Cap (Stop Button Cover)	1	
68	TP10877	Black Cap (Start Button Cover)	1	
	TP01939	Hex. Wrench Key 4	1	
	TP04004	Hex. Wrench Key 5	1	
	TP06012	Spanner	1	
	TP17991	Spanner 12	1	
	TP10198	Tool Box 285 X 125 X 62	1	
	TQ03228	Instruction Manual	1	
	TB02142	Hook Clamp Ass'y	1	
	TB02141	Foot Switch Relay Box Ass'y	1	

PUMP HPD-05 ASSEMBLY AND PARTS LIST



The part numbers with () are included in the Assy parts written above them.

No.	Part No.	Part Name	Q'ty	Price
1	TP05874	Check Set Plug	4	
2	TP05873	Back-up Ring P-10	5	
3	TP05872	O-Ring P-10	5	
4	TP05871	Delivery Valve	5	
5	TP05870	Spring 0.3 X 5 X 7	2	
6	CP00800	Ball 1/4	7	
7	TP05869	Valve Seat	7	
8	TP05868	Packing	8	
9	TA9A586	Cylinder Piston Sub Assy	2 sets	
10	TP05875	Suction Valve	3	
11	TP05876	Elbow PT1/8 X PF1/4	2	
12	TP05877	Filter	2	
13	TP05863	Hex. Screw PT1/4	3	
14	TP05878	O-Ring P-8	3	
15	TP05865	Piston Spring	3	
16	TP05866	Spring Seat	2	
17	TP05867	Retaining Ring E-64	2	
18	TQ03341	Hex. Bolt 6 X 30	12	
19	TA97817	Oil Tank Assy	1 set	
21	TA92456	Stopper Bolt	1 set	
22	TA94198	Steel Pipe Assy	1 set	
23	TQ03234	Drain Pipe	1	
24	TP07963	Check Set Plug	1	
25	TP07962	Retaining Ring WR-11	1	
26	TP07961	Spring Seat	1	
27	TA9A603	L Cylinder Piston Sub Assy	1 set	
28	TP07964	Suction Filter	1	
29	TQ03233	Bracket	1	
30	TP05856	Oil Seal S25 X 38 X 8	1	
31	TQ03232	Pump Body	1	
32	TP09671	Track Follower	1	
33	TP09672	Distance Collar	1	
34	TP05978	Ball Bearing	1	
35	TP09673	E Ring 10	1	
36	CP01086	Internal Retaining Ring C	1	
37	TQ03340	Hex. Bolt 6 X 25	8	
38	TP05853	Seal Washer W5	4	
39	TP13247	Hex. Bolt 5 X 22	4	
40	TP02863	Hex. Bolt 5 X 20	13	
41	TP05950	Copper Washer 5.5 X 8.5 X 1	13	
42	TP00513	Spring Washer M5	7	
43	TP05857	Hex. Bolt 5 X 70	4	
44	TP06597	Hex. Screw PT1/8	2	
45	TP06616	Valve Sleeve	1	
46	CQ15608	O-Ring P-6	1	

No.	Part No.	Part Name	Q'ty	Price
47	TP06618	Back-up Ring P-6	1	
48	TP06619	Spool	1	
49	TP06620	Valve Sleeve Plate	1	
50	TP05949	O-Ring P-7	1	
51	TP06632	Unloader Valve	1	
52	TP06633	Ball 5/16	1	
53	TP07966	Ball Retainer	1	
54	TP07967	Spring 7 X 25.2 X 2	1	
55	TQ03407	Hex. Bolt 12 X 15	1	
56	TP05422	Hex. Nut M12	1	
57	TP06637	Hex. Bolt 5 X 40	3	
58	TP14009	Hex. Nut M12 X 1	1	
59	TP14279	Adjust Screw	1	
60	TP11241	O-Ring P-7	1	
61	TP14269	Spring 7 X 20 X 2	1	
62	TA98852	Relief Valve Sub Assy	1	
63	TP14267	Relief Valve Body	1	
64	TP12010	O-Ring P-14	1	
65	TP14266	Relief Valve Seat	1	
66	TP14265	Copper Washer 6 X 16 X 0.8	1	
67	TQ03463	Solenoid Valve (115V)	1	
68	TP06217	Hex. Bolt 6 X 25	4	
69	TQ03249	Manifold	1	
70	TQ02990	Label Caution Relief Valve	1	
71	TQ03248	Gasket	1	
72	TP06597	Hex. Screw PT1/8	4	
73	CA94119	700R-3P Cupla w/Cap	1 set	
74	CA82240	450B-3P Assy - Seifer/Pump	1 set	
75	CB09421	450B-3P-D Assy	1 set	
76	TQ03238	Cupla Joint	2	
77	TB02491	Cover Assy (115V)	1 set	
77	TB02498	Cover Assy (230V)	1 set	
78	(TQ03237)	Label Warning (115V)	1	
78	(TQ03247)	Label Warning (230V)	1	
79	LP30251	+ Screw 4 X 16	4	
82	TP04234	Washer M4	4	
83	LP30299	Washer M4	4	
84	TB02393	Print Board	1set	
85	(TQ02621)	Relay G2R-2-S	2	
86	TQ03251	Transformer 115V/20V	1	
86	TQ03252	Transformer 230V/20V	1	
87	LQ00378	Pan Head Screw 3X6	2	
88	TQ03131	Switch ET105D12	1	
89	TB01467	Metal Consent Receptacle	1set	
90	TP00056	+ Screw 3 X 6	4	
91	TQ02893	Snap-in Switch LLA25A2	1	

No.	Part No.	Part Name	Q'ty	Price
92	LP08489	+ Screw 4 X 6	1	
93	TA9A758	Cable Assy (115V)	1set	
93	TB01207	Cable Assy (230V)	1set	
94	TP01757	Cord Stopper	1	
95	TA98692	Magnet Switch Assy (115V)	1set	
95	TA98692	Magnet Switch Assy (230V)	1set	
96	TB02490	Switch Plate Sub Assy	1set	
97	(TQ03243)	Label - Change Switch	1	
98	(TQ03244)	Label - Power Supply	1	
99	TQ03193	Pan Head Screw 4 X 6	6	
100	LQ00190	+ Pan Head Screw 4 X 8	8	
101	TA97964	Motor Assy (115V)	1set	
101	TA97968	Motor Assy (230V)	1set	
102	TQ03250	Partition	1	
103	TQ03327	Hex. Bolt 5 X 10	4	
104	TP04769	Plate Serial Number	1	
105	TP05136	Drive Rivet No.2 X4.8	2	
106	TP05925	Rubber Foot	4	
107	TP05926	Washer 6.5 X 10 X 1	4	
108	TQ01321	Condenser Box	1	
109	TQ03329	Hex. Bolt 5 X 15	3	
110	TP07118	Hex. Bolt 6 X 16	2	
111	TA98768	Condenser Assy	1set	
112	TQ01322	Condenser Cover	1	

ACCESSORIES

No.	Part No.	Part Name	Q'ty	Price
20	TP05929	Oil Cap	1	
80	TQ03239	Hand Grip	1	
81	TP03086	Hex. Bolt 6 X 20	2	
	TP03249	Hex. Wrench Key 8	1	
	TP04004	Hex. Wrench Key 5	1	
	TQ03246	Instruction Manual	1	
	TA92729	Auxiliary Oil Can Assy	1	